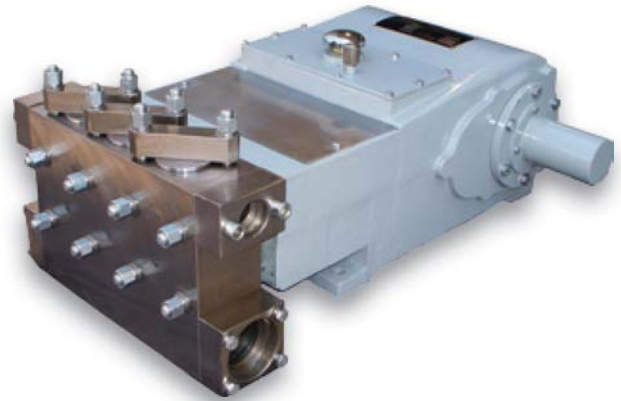


## T25 Triplex Pump

### Pump Specifications

Rated (HP, kW)	25	18.6
Stroke length (in., mm)	2.36	59.9
Maximum discharge pressure (PSI, Bar)		
T25H	5,060	349
T25L	1,650	114
Rated rod load (lb, kg)	3,975	1803
Maximum speed, RPM	300	
Minimum speed, RPM	90	
Crankshaft dimensions (in., mm)		
Diameter	2.00	50.8
Length (both sides)	4.00	101.6
Keyway, width × depth (in., mm)	.500 × .250	12.7 × 6.4
Oil capacity (gal, l)	2.2	10.0
Weight (lb, kg); estimates only	615	279.0
Mechanical efficiency	90%	



### Flange Connections

Pump Model	Discharge Connection Sizes (in., mm)	Suction Connection Sizes (in., mm)
T25H	1.0 (25.4) NPT	2.0 (50.8) NPT
T25L	1.5 (38.1) NPT	3.0 (76.2) NPT

### Applications

- Amine gas sweetening
- Methanol injection
- Water injection
- Chemical injection
- Glycol gas dehydration
- Light hydrocarbon transportation
- Crude transfer
- Polymer flood
- Produced water disposal
- Steam boiler feed
- Hydrostatic testing
- Ammonia
- Horizontal directional drilling
- Hot-oil truck injection

### Standard Equipment

- Forged duplex stainless steel, or forged carbon steel fluid ends
- Duplex stainless steel stuffing boxes
- Disc valve or A/R Stainless Steel
- Tungsten carbide coated plungers over stainless steel base or solid ceramic plungers
- Double extended crankshaft
- Multiple plunger packing arrangements offered

### Optional Accessories

- Packing lubricators
- Customized plunger packing arrangements
- Complete pump packages
- Ported stuffing boxes and leak detection systems offered for H<sub>2</sub>S or light fluids
- Auxillary lube kit (slow speed kit allows pump to be turned down to 50 rpm)

## T25 Triplex Pump

### Performance Ratings

Model (standard)	Plunger Diameter (in.)	Gallons Per Revolution	Maximum Pressure PSI	90 RPM		100 RPM		150 RPM		250 RPM		300 RPM API 674		Intermittent Duty 430 RPM	
				GPM	BPD	GPM	BPD	GPM	BPD	GPM	BPD	GPM	BPD	GPM	BPD
T25H	1.000	0.0241	5,060	2.2	74	2.4	83	3.6	124	6.0	207	7.2	248	10.4	355
	1.250	0.0376	3,240	3.4	113	3.8	129	5.6	194	9.4	323	11.3	387	16.2	555
	1.500	0.0542	2,250	4.9	167	5.4	186	8.1	279	13.6	465	16.3	558	23.3	799
T25L	1.750	0.0738	1,650	6.6	228	7.4	253	11.1	379	18.4	632	22.1	759	31.7	1,088
	2.000	0.0964	1,270	8.7	297	9.6	330	14.5	496	24.1	826	28.9	991	41.4	1,421
	2.250	0.1220	1,000	11.0	376	12.2	418	18.3	627	30.5	1,046	36.6	1,255	52.5	1,798
	2.500	0.1506	810	13.6	465	15.1	516	22.6	774	37.6	1,291	45.2	1,549	64.8	2,220

Model (metric)	Plunger Diameter (in.)	Liters Per Revolution	Maximum Pressure BAR	90 RPM		100 RPM		150 RPM		250 RPM		300 RPM API 674		Intermittent Duty 430 RPM	
				LPM	M <sup>3</sup> /hr	LPM	M <sup>3</sup> /hr	LPM	M <sup>3</sup> /hr	LPM	M <sup>3</sup> /hr	LPM	M <sup>3</sup> /hr	LPM	M <sup>3</sup> /hr
T25H	1.000	0.0912	349	8.2	0.5	9.1	0.5	13.7	0.8	22.8	1.4	27.4	1.6	39.2	2.4
	1.250	0.1425	223	12.8	0.8	14.2	0.9	21.4	1.3	35.6	2.1	42.7	2.6	61.3	3.7
	1.500	0.2052	155	18.5	1.1	20.5	1.2	30.8	1.8	51.3	3.1	61.6	3.7	88.2	5.3
T25L	1.750	0.2793	114	25.1	1.5	27.9	1.7	41.9	2.5	69.8	4.2	83.8	5.0	120.1	7.2
	2.000	0.3648	87	32.8	2.0	36.5	2.2	54.7	3.3	91.2	5.5	109.4	6.6	156.9	9.4
	2.250	0.4617	69	41.6	2.5	46.2	2.8	69.3	4.2	115.4	6.9	138.5	8.3	198.5	11.9
	2.500	0.5700	56	51.3	3.1	57.0	3.4	85.5	5.1	142.5	8.5	171.0	10.3	245.1	14.7

**General Notes**

- Capacities shown are based on 100 percent volumetric efficiency. Actual capacities are lower, based on discharge pressure and fluid compressibility.
- API-674 and NACE-compliant designs are available; consult Weatherford for details and exceptions to these standards.
- For operation below 90 RPM, an auxiliary lubrication system is required.
- Standard plunger sizes are shown, however other sizes are available upon request.

### General Dimensions (sizing dimensions not for construction purposes)

